



August 2015
Snapshot

MONTHLY
CUSTOMS RICE
EXPORT DATA

AIREA

AIREA

Indian Rice Export Report–AUGUST 2015

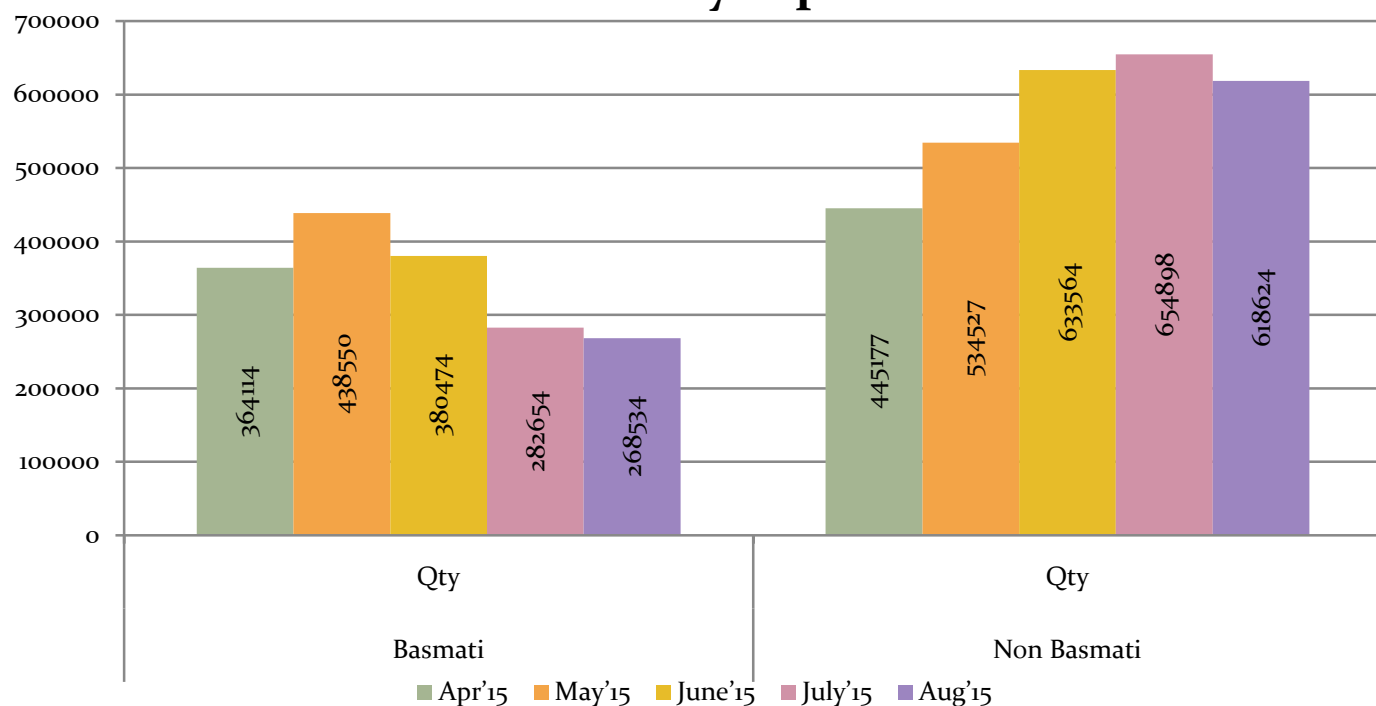
Qty in Tonne; Value in Rs Lacs

Source: Customs(Infodrive)

Month-to-Month Comparison

Year	Basmati		% change (Qty)	Non Basmati		% change (Qty)	Total Basmati + Non basmati		Total % (Qty)
	Qty (Ton)	Value (Rs lacs)		Qty (Ton)	Value (Rs lacs)		Qty (Tonnes)	Value (Rs lacs)	
Apr'15	364114	201343		445177	96500		809291	297843.9	
May'15	438550	230151	20.44	534527	110614	20.07	973077	340765	20.02
June'15	380474	201391	-13.2	633564	129626	18.2	1014038	331017	4.2
July'15	282654	147209	-25.7	654898	134433	3.36	937552	281642	-7.5
Aug'15	268534	138066	-4.9	618624	129095	-5.53	887158	267161	-5.3
Total	1734326	918160		2886790	600268		4621116	1518428.9	

Monthly Export



BASMATI

Top Importers of August

	Country	Quantity August	% Share August (Qty)
1	UAE	69673	25.95
2	SAUDI ARABIA	61292	22.82
3	IRAN	35337	13.16
4	UK	15964	5.94
5	IRAQ	14323	5.33
6	KUWAIT	14240	5.30
7	OMAN	6661	2.48
8	YEMEN	5682	2.12
9	USA	4541	1.69
10	Turkey	4059	1.51

High Value in terms of Unit Rate

	COUNTRY	AVG RATE(\$)
1	KUWAIT	1083
2	USA	1015
3	OMAN	865
4	SAUDI ARABIA	839
5	IRAN	815

Top Ports

	PORT	QUANTITY(ton)
1	MUNDRA	180131
2	LONI ICD	21234
3	KANDLA	21131

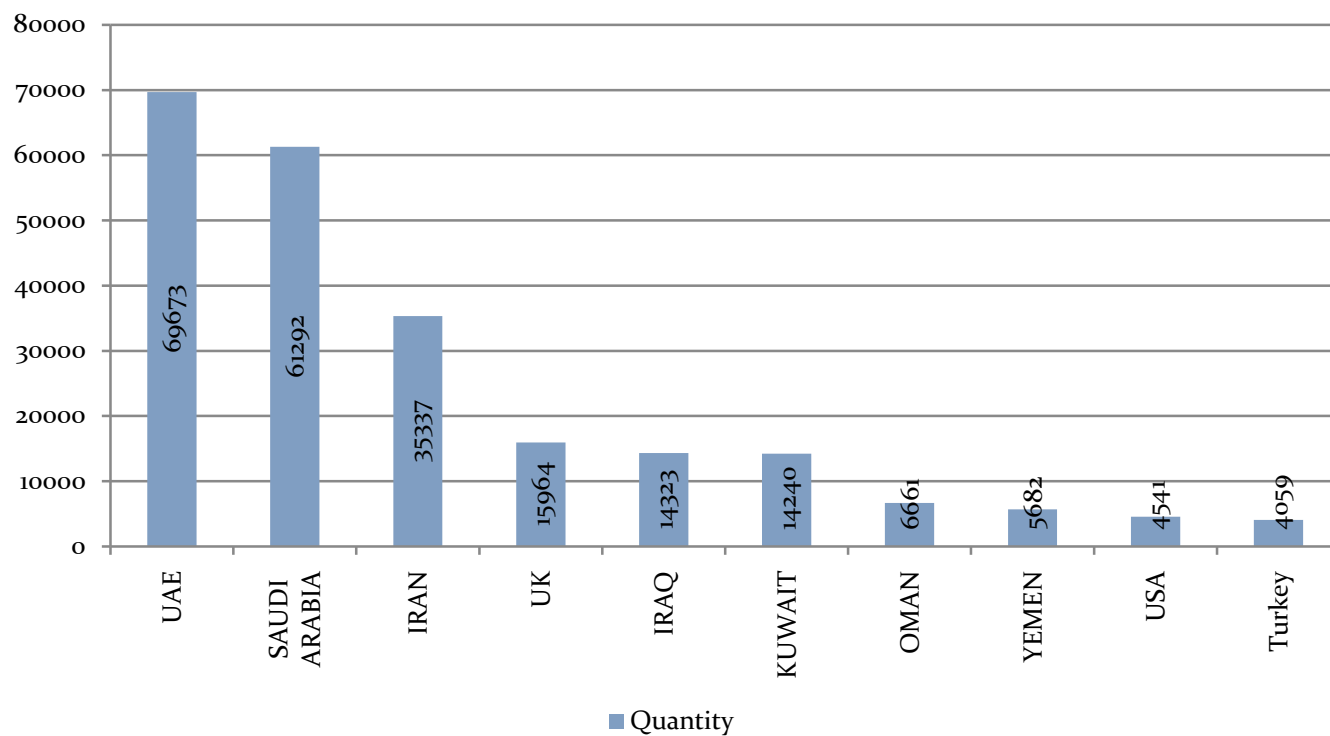
Top Importers July

	COUNTRY	QUANTITY (ton)
1	SAUDI ARABIA	65247
2	IRAN	55977
3	UAE	46246
4	UK	17185
5	IRAQ	15140

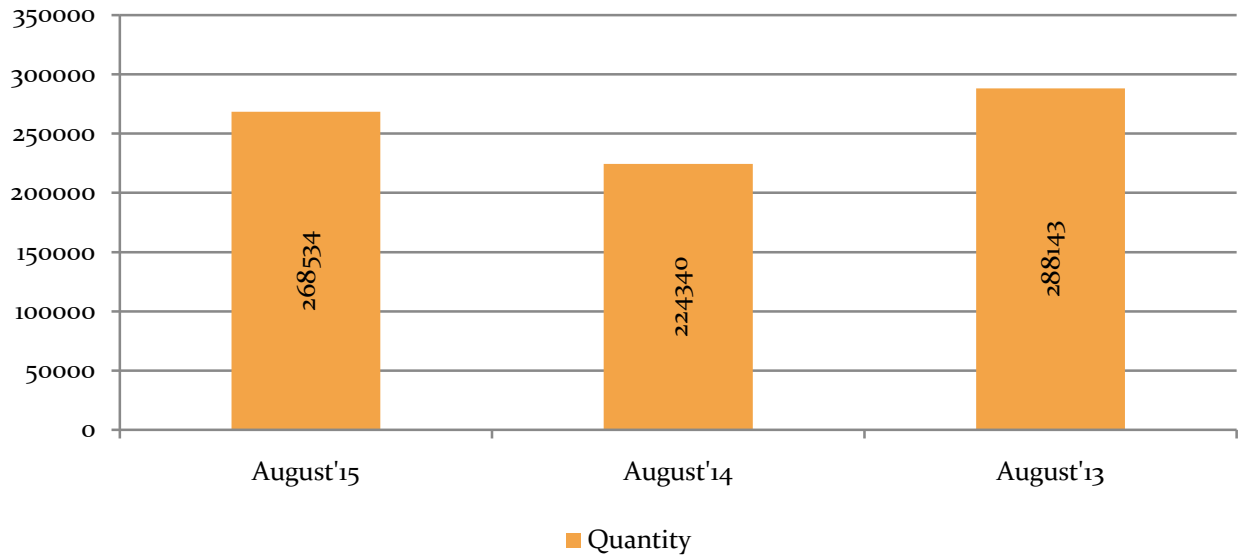
Year on Year Comparison: Basmati

Year	Basmati		% change (qty)
	Qty (ton)	Value (Rs lacs)	%
August 2015	268534	138066	19.69
August 2014	224340	171086	-22.14
August 2013	288143	193562	

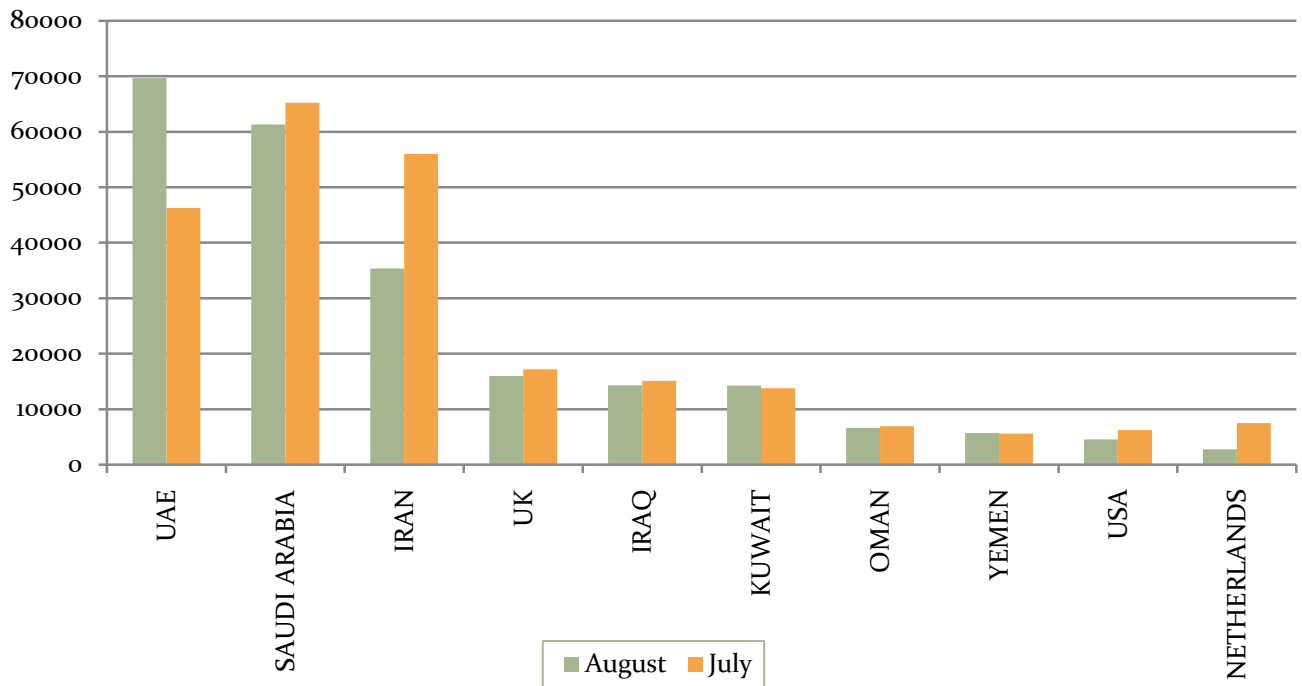
Top Importers: Basmati



Basmati Export



Top Importers:Basmati



NON-BASMATI

Top Importers of August

	COUNTRY	QUANTITY (In MT)	SHARE (%)
1	BENIN	110087	17.80
2	SENEGAL	68637	11.10
3	GUINEA	56702	9.17
4	SOUTH AFRICA	53644	8.67
5	COTE D IVOIRE	37445	6.05
6	SOMALIA	31908	5.16
7	TURKEY	24524	3.96
8	SINGAPORE	21899	3.54
9	UAE	17981	2.91
10	BANGLADESH	16620	2.69

HIGH VALUE IN TERMS OF UNIT RATE

	COUNTRY	AVG. RATE (\$)
1	SAUDI ARABIA	444
2	UAE	443
3	SINGAPORE	364
4	SOMALIA	333
5	BENIN	327

Top Ports

	PORT	QUANTITY (ton)
1	KAKINADA	221985
2	MUNDRA	91719
3	CALCUTTA SEA	83388

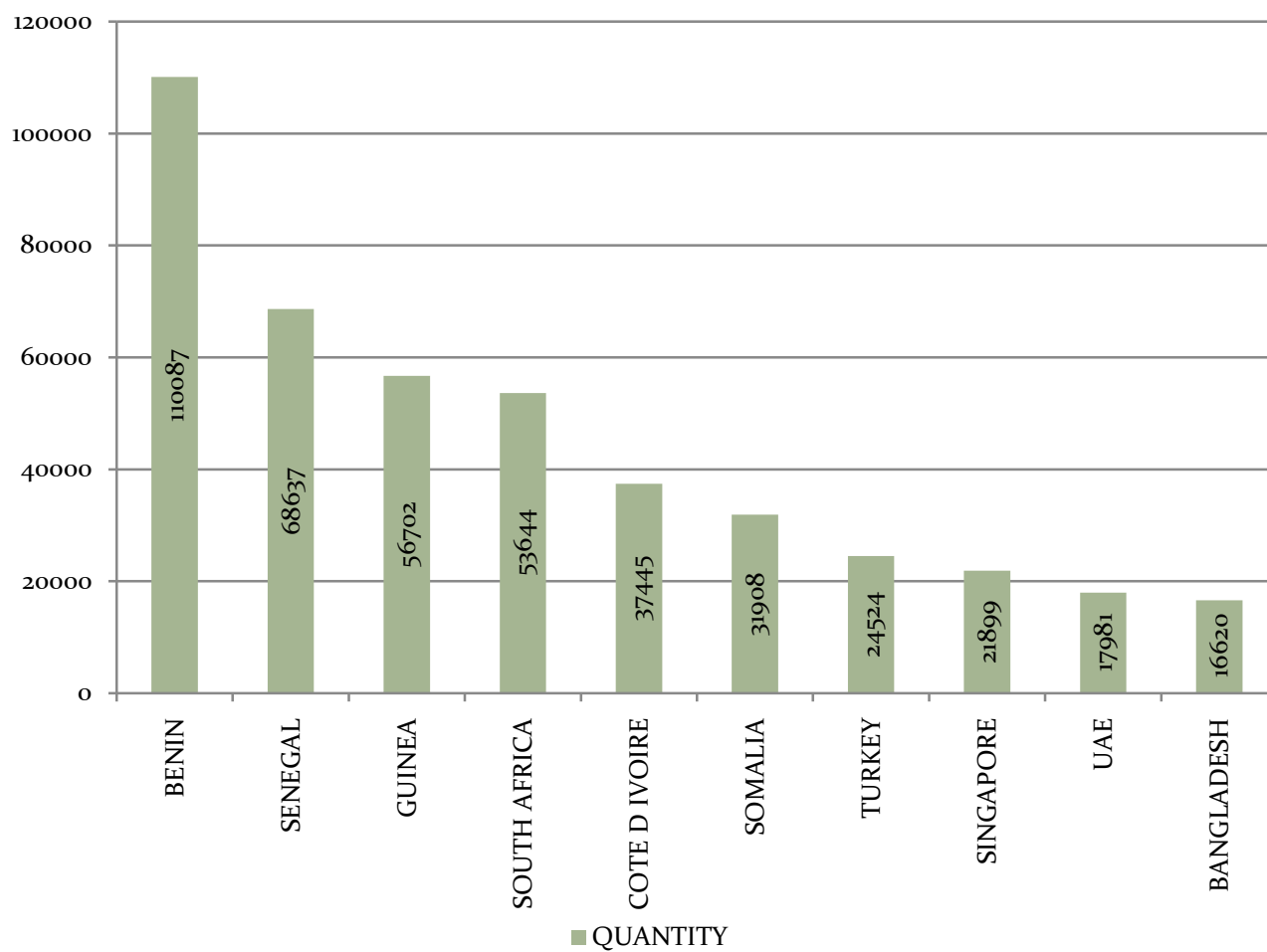
Top Importers of July

	COUNTRY	QUANTITY
1	SENEGAL	114468
2	BENIN	90537
3	COTE D IVOIRE	75670
4	GUINEA	64166
5	SOMALIA	32001

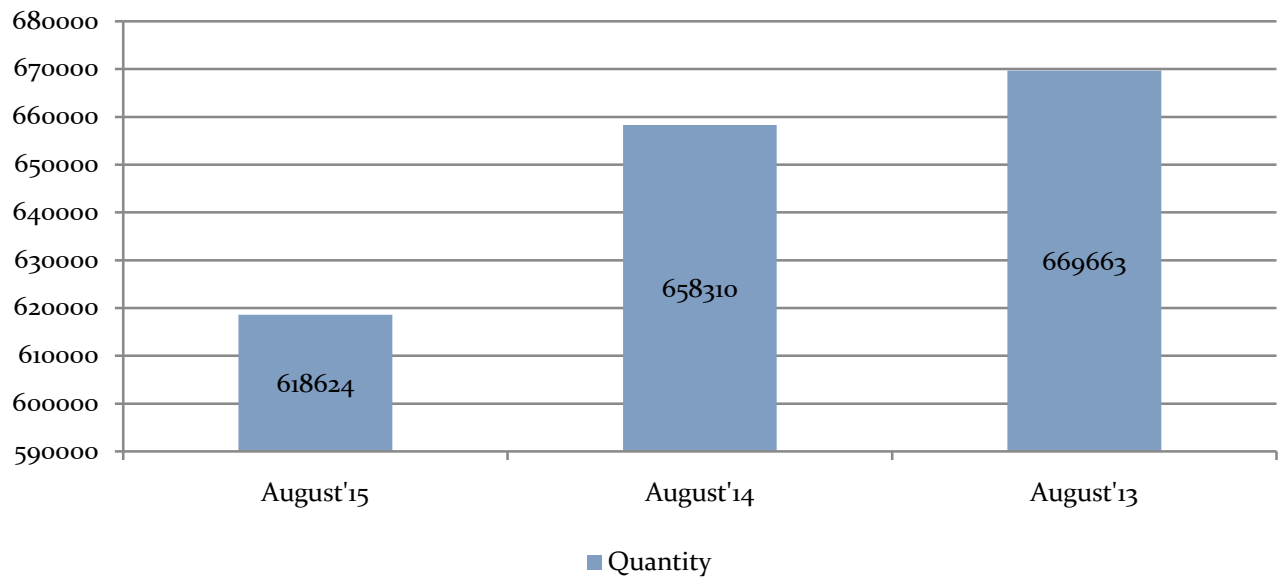
Year on Year comparison: Non Basmati

YEAR	Non Basmati		% change (qty)
	Qty(ton)	Value(Rs lacs)	%
August 2015	618624	129095	-6.02
August 2014	658310	149542	-1.69
August 2013	669663	153718	

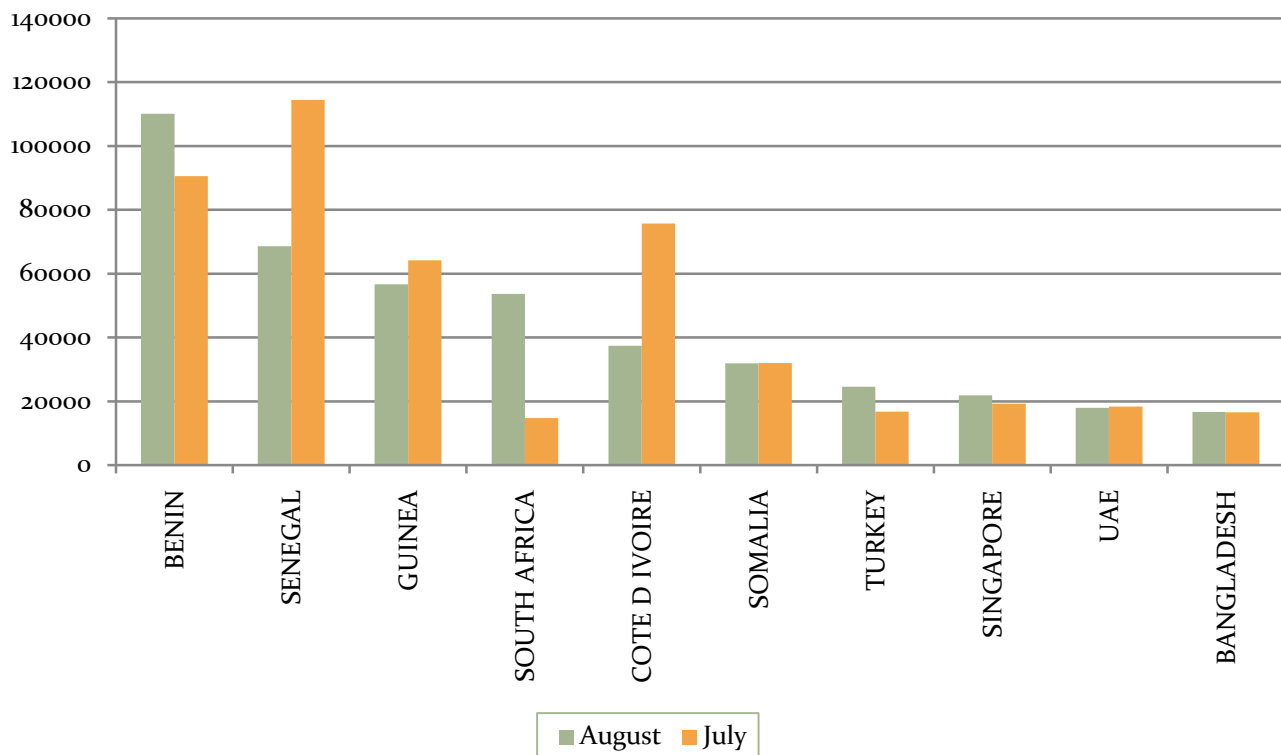
Top Importers: Non Basmati



Non Basmati



Top Importers: Non Basmati



PADDY: Total paddy exported 8231 ton at a value of \$ 4.6 million.

Top Importers of August

	COUNTRY	QUANTITY (ton)
1	NEPAL	4141
2	PHILIPPINES	981
3	Benin	943
4	UK	570
5	TOGO	429

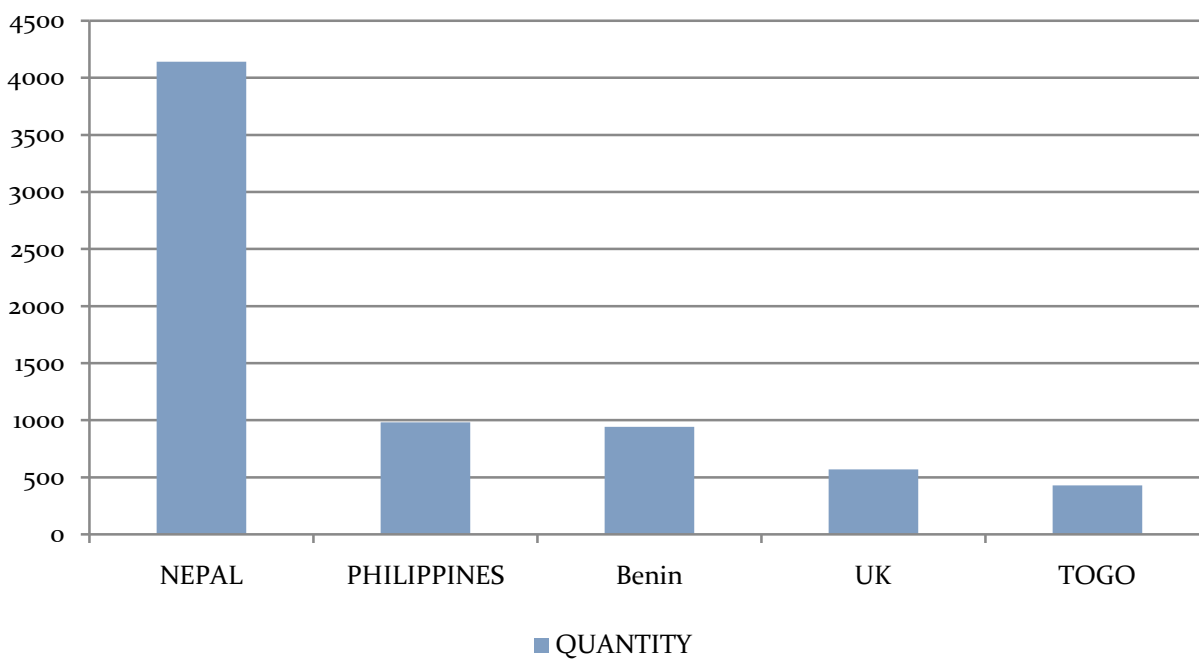
Top Importers of July

	COUNTRY	QUANTITY (ton)
1	NEPAL	6290
2	UK	1225
3	PHILIPPINES	1012
4	BENIN	829
5	SINGAPORE	517

Top Ports

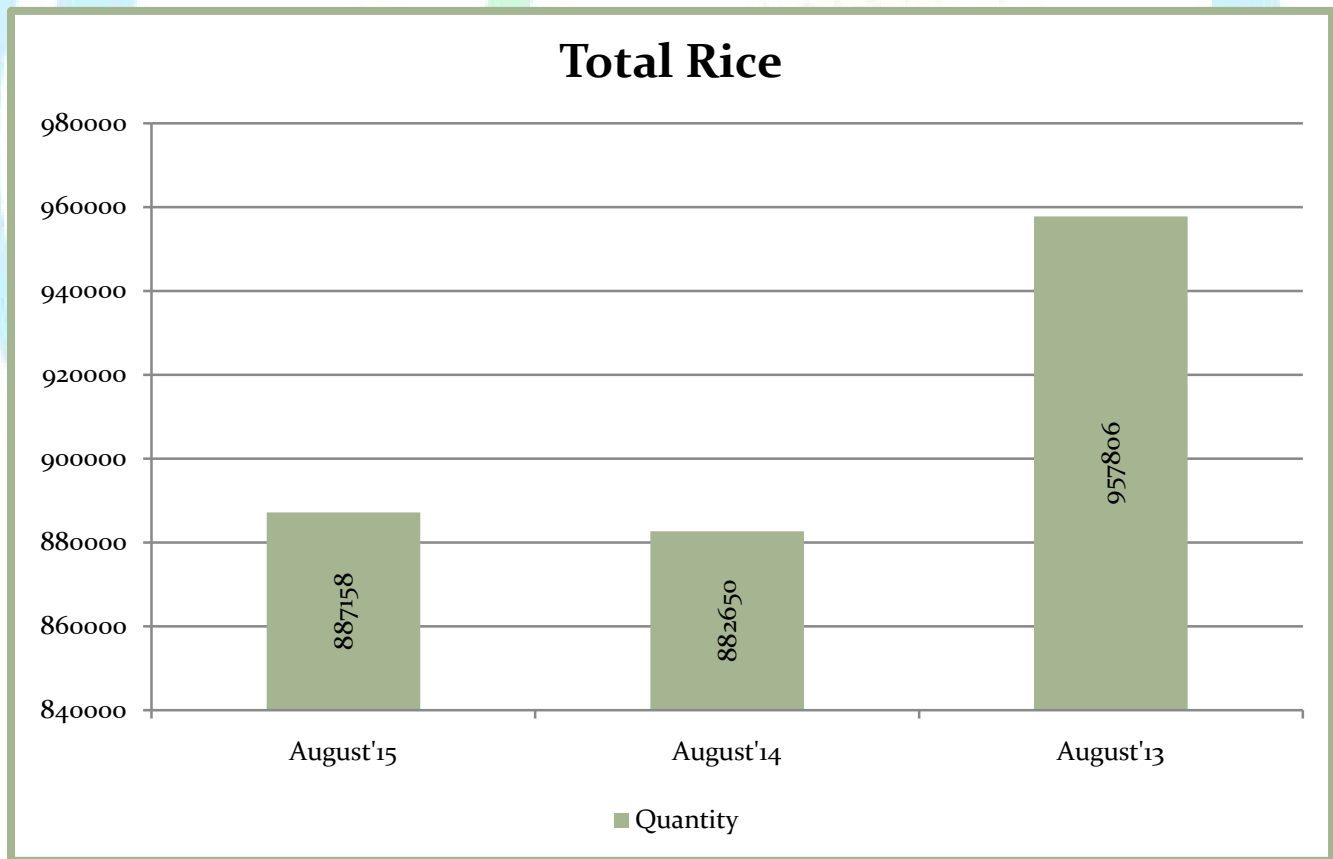
	PORT	QUANTITY (tonne)
1	RAXAUL	4141
2	MUNDRA	1380
3	HYDERABAD ICD	1013

Top Importers:Paddy



Year on Year comparison: Total Rice

Month	Total Rice Basmati+ Non Basmati	
	Qty(Ton)	Value(Rs Lacs)
August 2015	887158	267161
August 2014	882650	320628
August 2013	957806	347280



BasmatiQty-MT
Value-Rs Lac

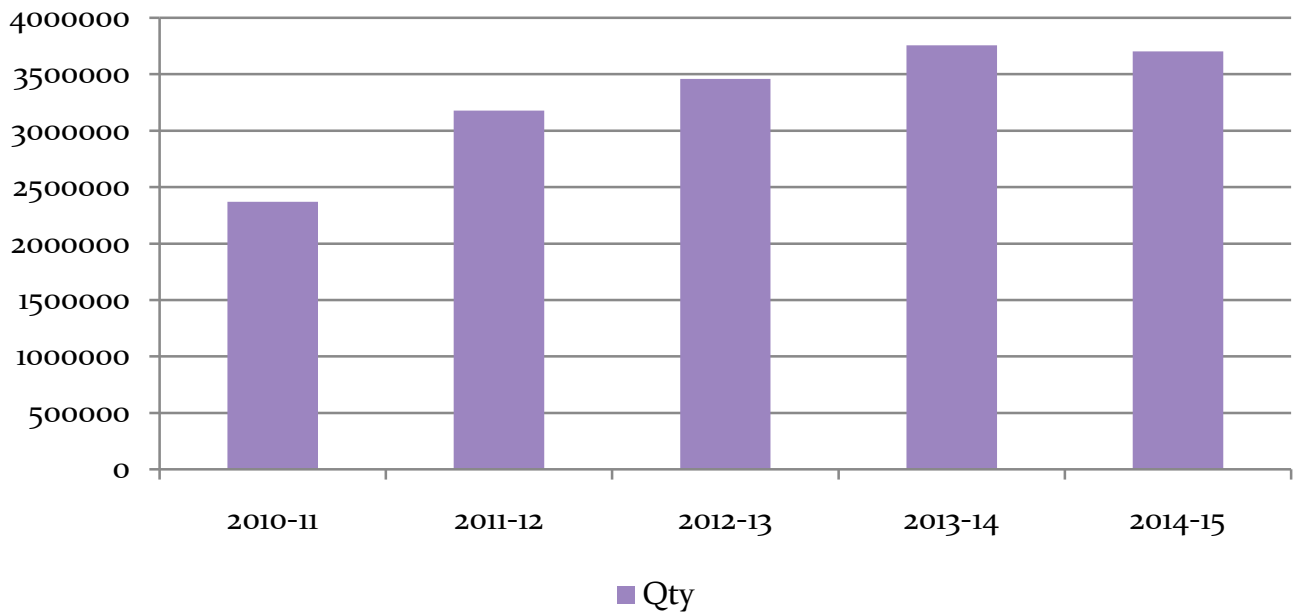
	2013-14		2014-15		2015-16	
Months	qty	value	qty	value	qty	value
April	392799	259012.86	285108	242828.46	348565	213671.78
May	345188	241733.03	337150	290473.99	431895	251399.48
June	378786	282534	364636	308190	351894	213011.22
July	333990	254022.49	233774	196313.39	276219	161864.42
August	275844	213016.1	217355	182882.55		
Sept	206876	168745.49	203733	165976.96		
Oct	180191	142560	295146	194555.92		
Nov	252292	190266	298274	210240.78		
Dec	376614	312557.79	382720	257996.7		
Jan	345687	287055.54	350320	227593.9		
Feb	350092	300457.77	379888	235181.31		
March	319005	278051	400195	250632.85		
Total	3757364	2930012.07	3748299	2762866.81	1408096	839839.08

Non Basmati

	2013-14		2014-15		2015-16	
Months	qty	value	qty	value	qty	value
April	392939	90706.32	390777	101506.43	466680	113225.9
May	473325	108988.29	425084	106612.65	577734	134471.22
June	559846	137214.00	493047	125316	599732	137487.13
July	652759	170139.71	535362	132136.23	673185	153655.40
August	708765	178591.08	699344	173089.33		
Sept	790713	203330.62	886439	240976.36		
Oct	622473	158512.64	822943	210810.89		
Nov	422477	105588	726343	182487.45		
Dec	663588	157913.96	594617	147738.25		
Jan	600331	151710	780790	197770.63		
Feb	618623	155205	674187	156021.67		
March	512693	131416.64	654908	156449.38		
Total	7018532	1749316.26	7683841	1930915.27	2325382	540478.14

Source: DGCIS

Basmati



Non Basmati

