



---

November 2015  
Snapshot

---

MONTHLY  
CUSTOMS RICE  
EXPORT DATA

---

AIREA

---

AIREA

## Indian Rice Export Report–November 2015

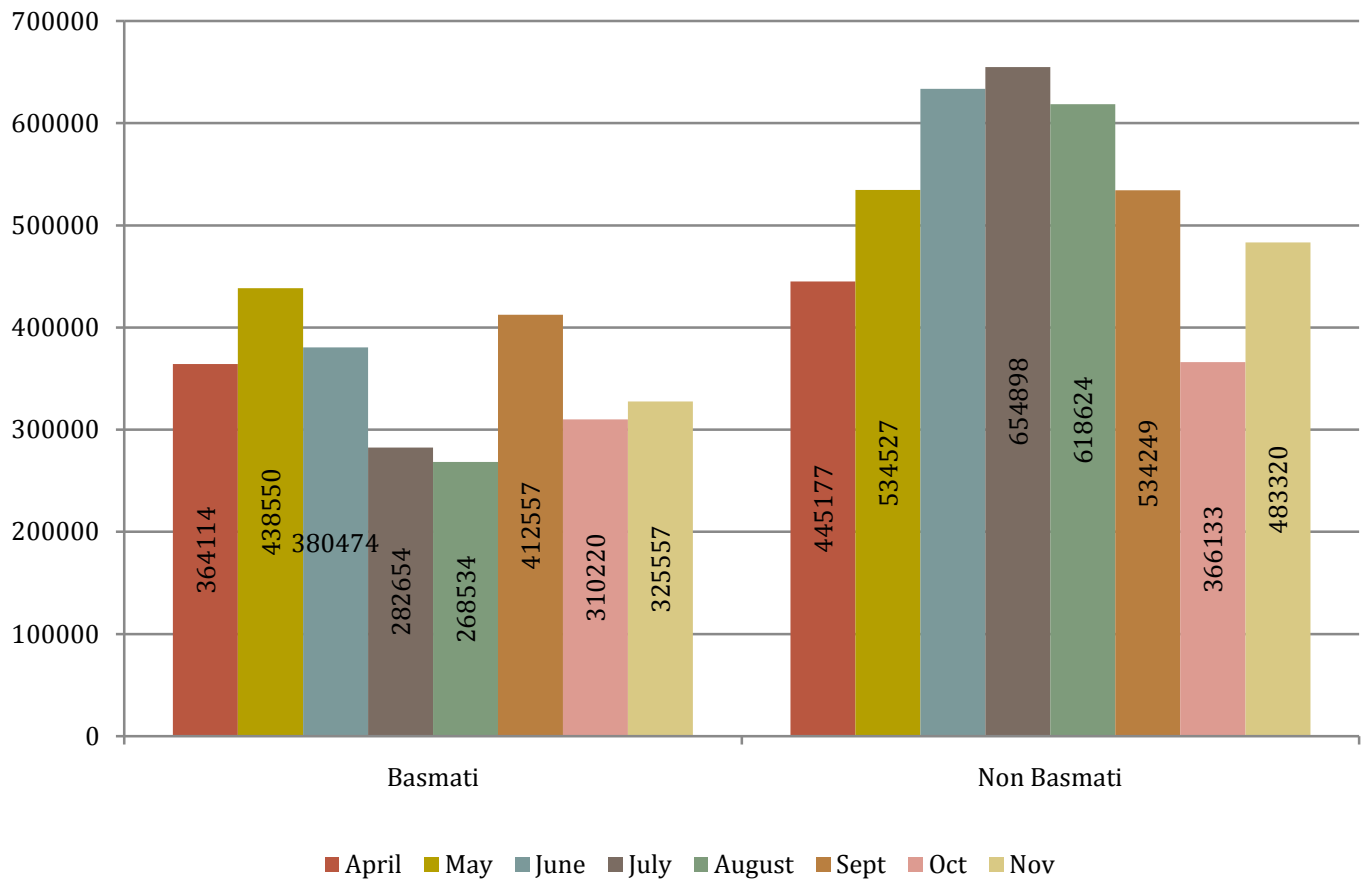
Qty in Tonne; Value in Rs Lacs

Source: Customs (Infodrive)

### Month-to-Month Comparison

Year	Basmati		%	Non Basmati		%	Total		Total
	Qty (Ton)	Value (Rs lacs)		change (Qty)	Qty (Ton)		Value (Rs lacs)	change (Qty)	
2015									
April	364114	201343		445177	96500		809291	297843.9	
May	438550	230151	20.44	534527	110614	20.07	973077	340765	20.02
June	380474	201391	-13.2	633564	129626	18.2	1014038	331017	4.2
July	282654	147209	-25.7	654898	134433	3.36	937552	281642	-7.5
Aug	268534	138066	-4.9	618624	129095	-5.53	887158	267161	-5.3
Sept	412557	217862	53.6	534249	117104	-13.6	946806	334966	6.72
Oct	310220	148917	-24.8	366133	80339	-31.4	676353	229256	-28.5
Nov	325557	155368	5.58	483320	98253	32.01	808877	253621	19.88
<b>Total</b>	2782660	1440307		4270492	895964		7053152	2336271.9	

## Month to Month Comparison



AIREA

# BASMATI

## Top Importers of November

	Country	Quantity	% Share (Qty)
1	IRAN	81479	24.88
2	IRAQ	68367	20.87
3	SAUDI ARABIA	52155	15.92
4	UAE	50889	15.54
5	YEMEN	15284	4.67
6	OMAN	7036	2.15
7	Turkey	6345	1.94
8	UK	5428	1.66
9	NETHERLANDS	4058	1.24
10	USA	3192	0.97

### High Value in terms of Unit Rate

	COUNTRY	AVG RATE(\$)
1	USA	970
2	BELGIUM	846
3	IRAQ	808
4	SAUDI ARABIA	799
5	OMAN	762

### Top Ports

	PORT	QUANTITY (ton)
1	MUNDRA	192806
2	KANDLA	41023
3	LONI ICD	22620

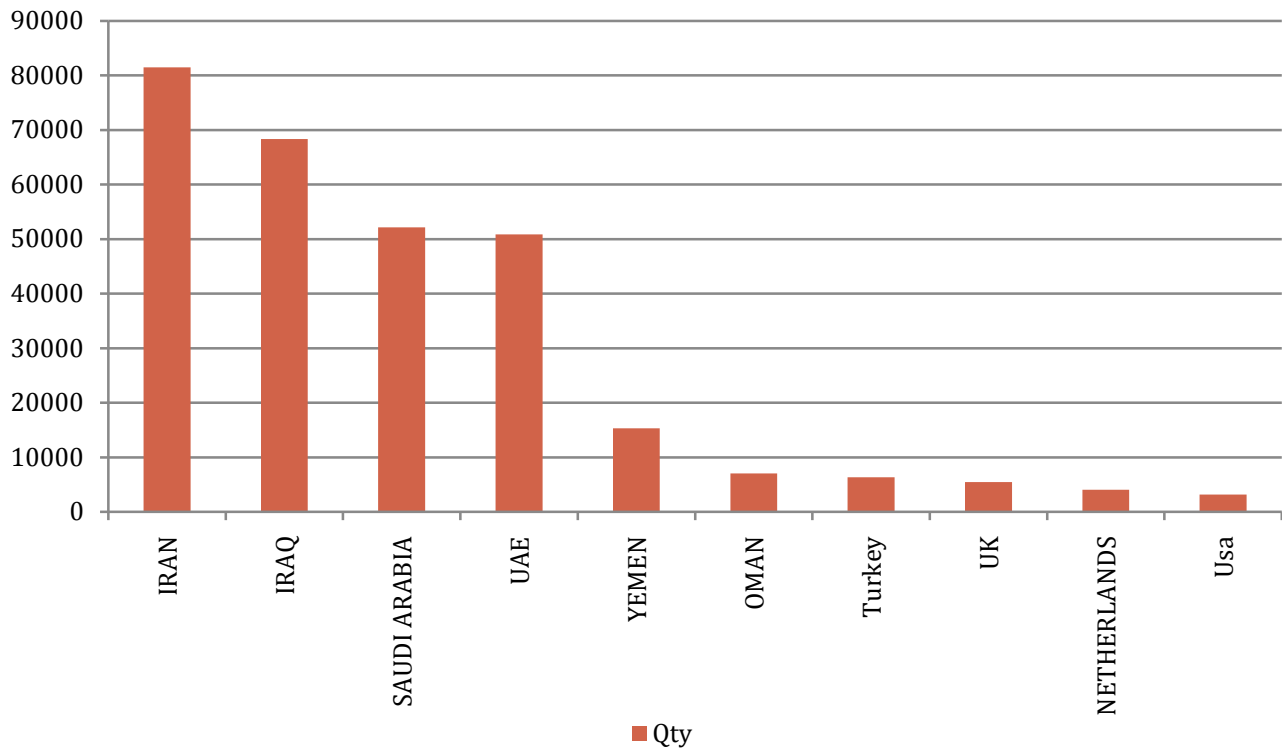
### Top Importers October

	COUNTRY	QUANTITY (ton)
1	UAE	70385
2	SAUDI ARABIA	63068
3	IRAN	45292
4	IRAQ	33513
5	KUWAIT	15185

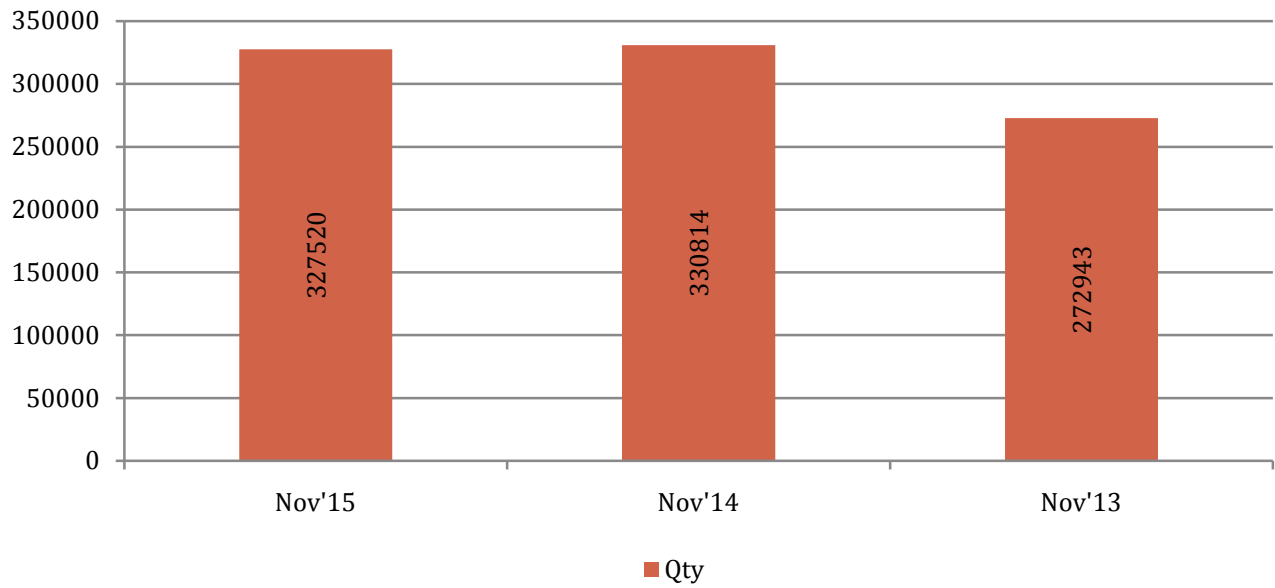
## Year on Year Comparison: Basmati

Year	Basmati		% change (qty)
	Qty (ton)	Value (Rs lacs)	%
November 2015	325557	155368	-1.58
November 2014	330814	195228	21.20
November 2013	272943	196307	

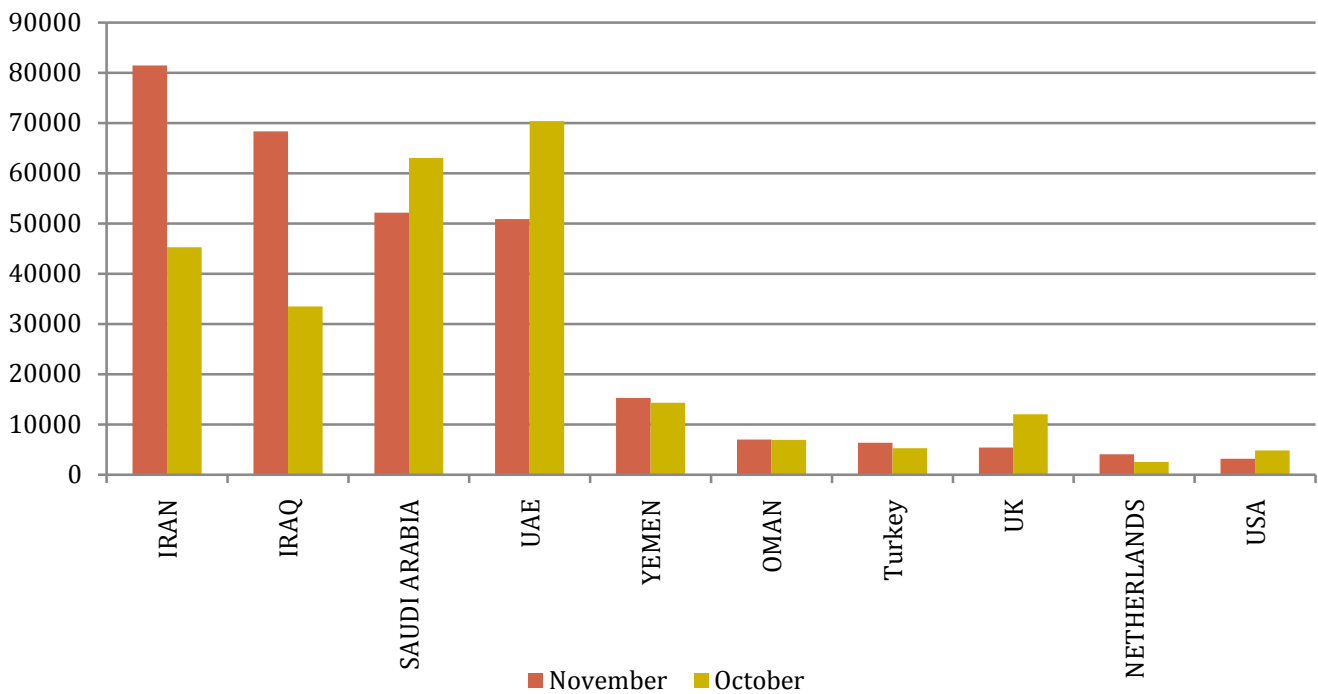
### November Top Importers



## Qty



## Basmati Top Importers



**NON-BASMATI**  
**Top Importers of NOVEMBER**

	Country	Quantity	Share (%)
1	SENEGAL	119758	24.78
2	COTE D IVOIRE	78545	16.25
3	BENIN	49522	10.25
4	GUINEA	29830	6.17
5	SOMALIA	21753	4.50
6	SOUTH AFRICA	16951	3.51
7	UAE	15663	3.24
8	TURKEY	15543	3.22
9	DJIBOUTI	15047	3.11
10	BANGLADESH	12753	2.64



## HIGH VALUE IN TERMS OF UNIT RATE

	COUNTRY	AVG. RATE (\$)
1	YEMEN	517
2	SINGAPORE	500
3	SAUDI ARABIA	444
4	UAE	429
5	OMAN	374

## Top Ports

	PORT	QUANTITY (ton)
1	MUNDRA	87826
2	VIZAG SEA	57283
3	CALCUTTA SEA	39772

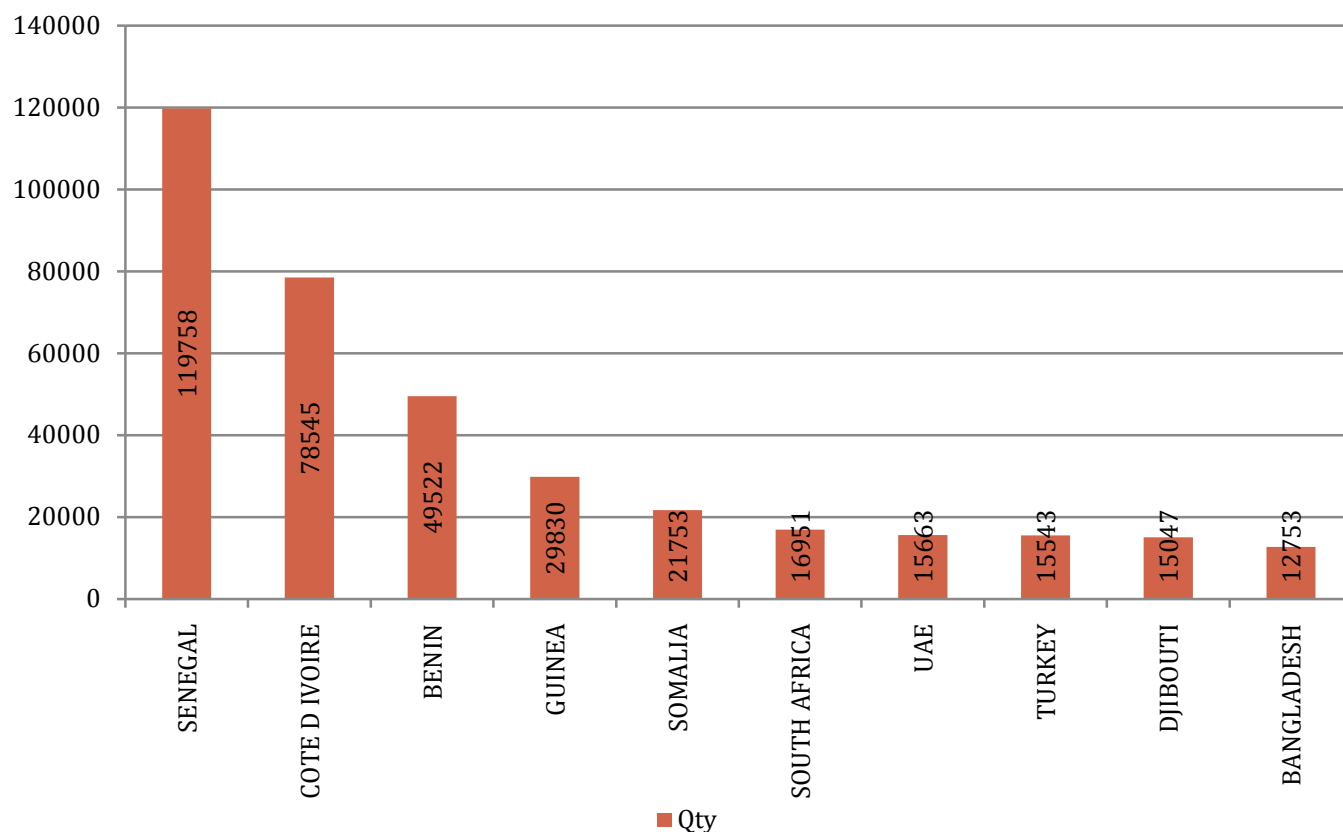
## Top Importers of OCTOBER

	COUNTRY	QUANTITY
1	BENIN	72149
2	SENEGAL	49173
3	SOMALIA	27523
4	BANGLADESH	22356
5	SOUTH AFRICA	21477

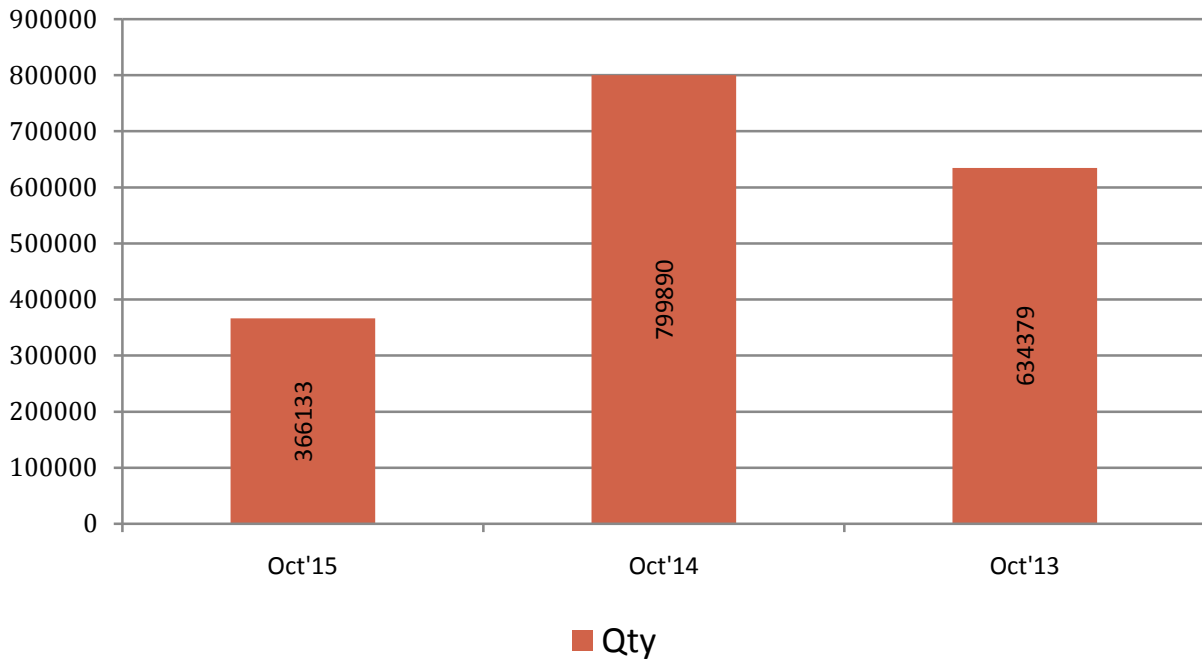
## Year on Year comparison: Non Basmati

YEAR	Non Basmati		% change (qty)
	Qty(ton)	Value(Rs lacs)	%
November 2015	483320	98253	-31.69
November 2014	707568	159915	37.43
November 2013	514875	120549	

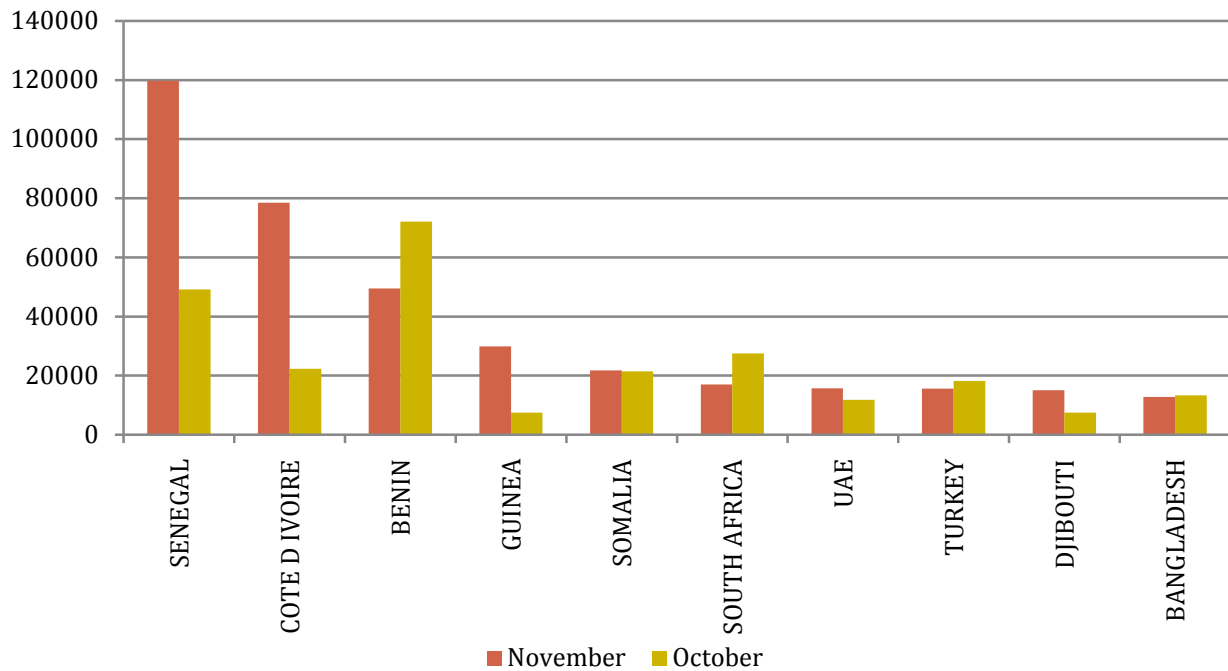
## November Top Importers



## Year on Year Comparison:Non Basmati



## Non Basmati Export



**PADDY: Total paddy exported 3190 ton at a value of \$ 2.8 million.**

### Top Importers of NOVEMBER

	<b>COUNTRY</b>	<b>QUANTITY (ton)</b>
<b>1</b>	UK	680
<b>2</b>	SINGAPORE	586
<b>3</b>	PORTUGAL	528
<b>4</b>	UAE	301
<b>5</b>	VIETNAM	238

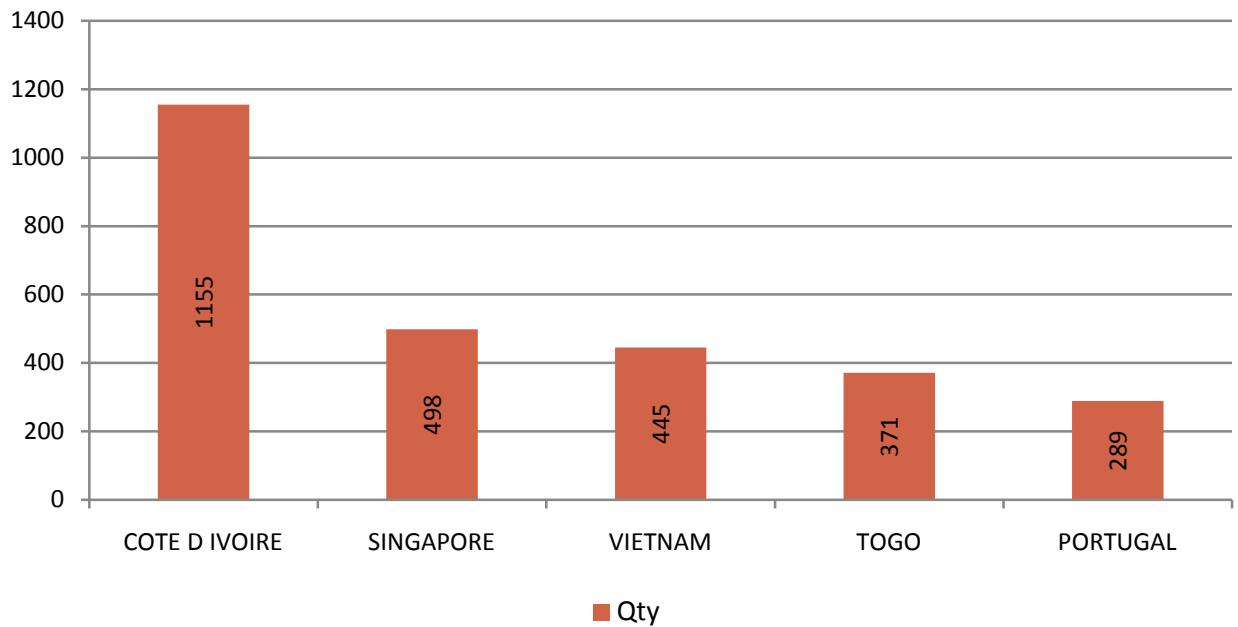
### Top Ports

	<b>PORT</b>	<b>QUANTITY (ton)</b>
<b>1</b>	MADRAS SEA	730
<b>2</b>	LONI ICD	689
<b>3</b>	CALCUTTA SEA	528

## Top Importers of OCTOBER

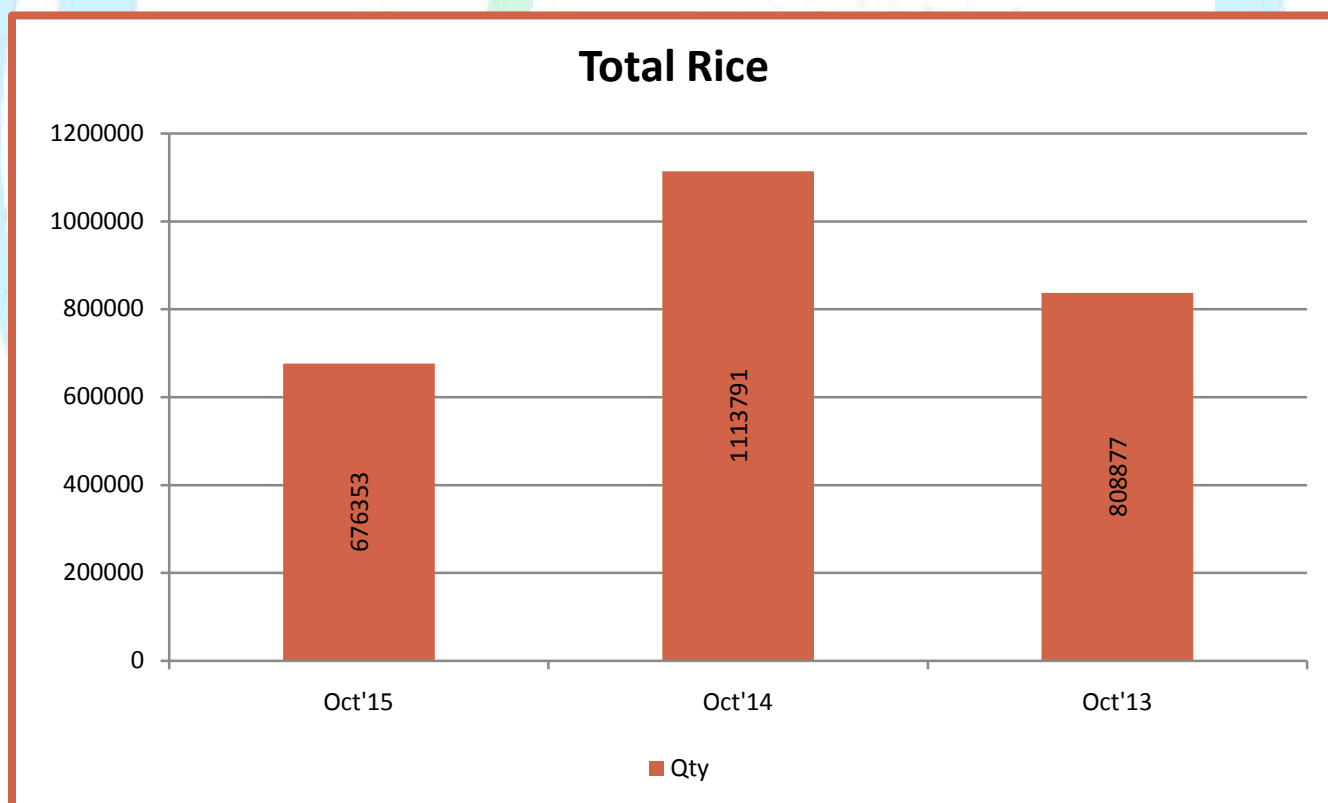
	COUNTRY	QUANTITY (ton)
1	COTE D IVOIRE	1155
2	SINGAPORE	498
3	VIETNAM	445
4	TOGO	371
5	PORTUGAL	289

### Paddy Top Importers



## Year on Year comparison: Total Rice

Month	Total Rice Basmati+ Non Basmati	
	Qty(Ton)	Value(Rs Lacs)
November 2015	808877	253621
November 2014	1038382	355143
November 2013	787818	290232



Qty-MT  
Value-Rs Lac

**Basmati**

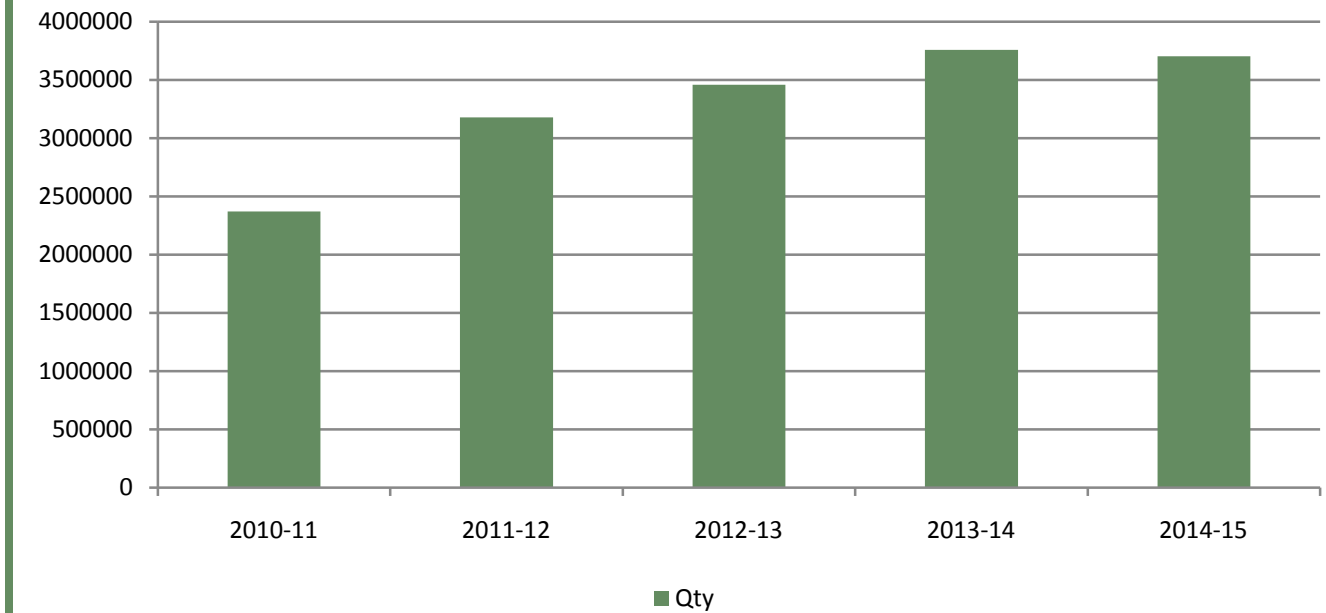
Months	2012-13		2013-14		2014-15		2015-16	
	qty	value	qty	value	qty	value	qty	value
April	278797	124095.1	392799	259012.9	285108	242828.5	348565	213671.8
May	322913	156636.2	345188	241733	337150	290474	431895	251399.5
June	346910	181816.6	378786	282534	364636	308190	351894	213011.2
July	299985	164130.7	333990	254022.5	233774	196313.4	276219	161864.4
August	248884	139080	275844	213016.1	217355	182882.6	270100	154122.3
Sept	230425	132658.1	206876	168745.5	203733	165977	405980	236905.86
Oct	193703	105582.8	180191	142560	295146	194555.9	304647	166453.65
Nov	207964	116446	252292	190266	298274	210240.8		
Dec	286546	171816.6	376614	312557.8	382720	257996.7		
Jan	318083	187039.9	345687	287055.5	350320	227593.9		
Feb	335395	207562	350092	300457.8	379888	235181.3		
March	387474	253055.3	319005	278051	400195	250632.9		
<b>Total</b>	<b>3457079</b>	<b>1939919</b>	<b>3757364</b>	<b>2930012</b>	<b>3748299</b>	<b>2762867</b>	<b>2389300</b>	<b>1397429</b>

**Non Basmati**

Months	2012-13		2013-14		2014-15		2015-16	
	qty	value	qty	value	qty	value	qty	value
April	275270	56521.33	392939	90706.32	390777	101506.4	466680	113225.9
May	715880	151427	473325	108988.3	425084	106612.7	577734	134471.2
June	593227	128390.8	559846	137214	493047	125316	599732	137487.1
July	486139	98844.37	652759	170139.7	535362	132136.2	673185	153655.4
August	467966	96509.85	708765	178591.1	699344	173089.3	575851	134391.7
Sept	451288	98119.87	790713	203330.6	886439	240976.4	536469	129816.92
Oct	644187	139275.4	622473	158512.6	822943	210810.9	381552	93522.5
Nov	627777	137912.5	422477	105588	726343	182487.5		
Dec	808432	178038.5	663588	157914	594617	147738.3		
Jan	551942	118873.1	600331	151710	780790	197770.6		
Feb	469221	104000.3	618623	155205	674187	156021.7		
March	557651	132017.4	512693	131416.6	654908	156449.4		
<b>Total</b>	<b>6648980</b>	<b>1439930</b>	<b>7018532</b>	<b>1749316</b>	<b>7683841</b>	<b>1930915</b>	<b>3811203</b>	<b>896570.8</b>

Source:DGCIS

## Basmati



## Non Basmati

