



January 2016
Snapshot

MONTHLY
CUSTOMS RICE
EXPORT DATA

AIREA

AIREA

Indian Rice Export Report–January 2016

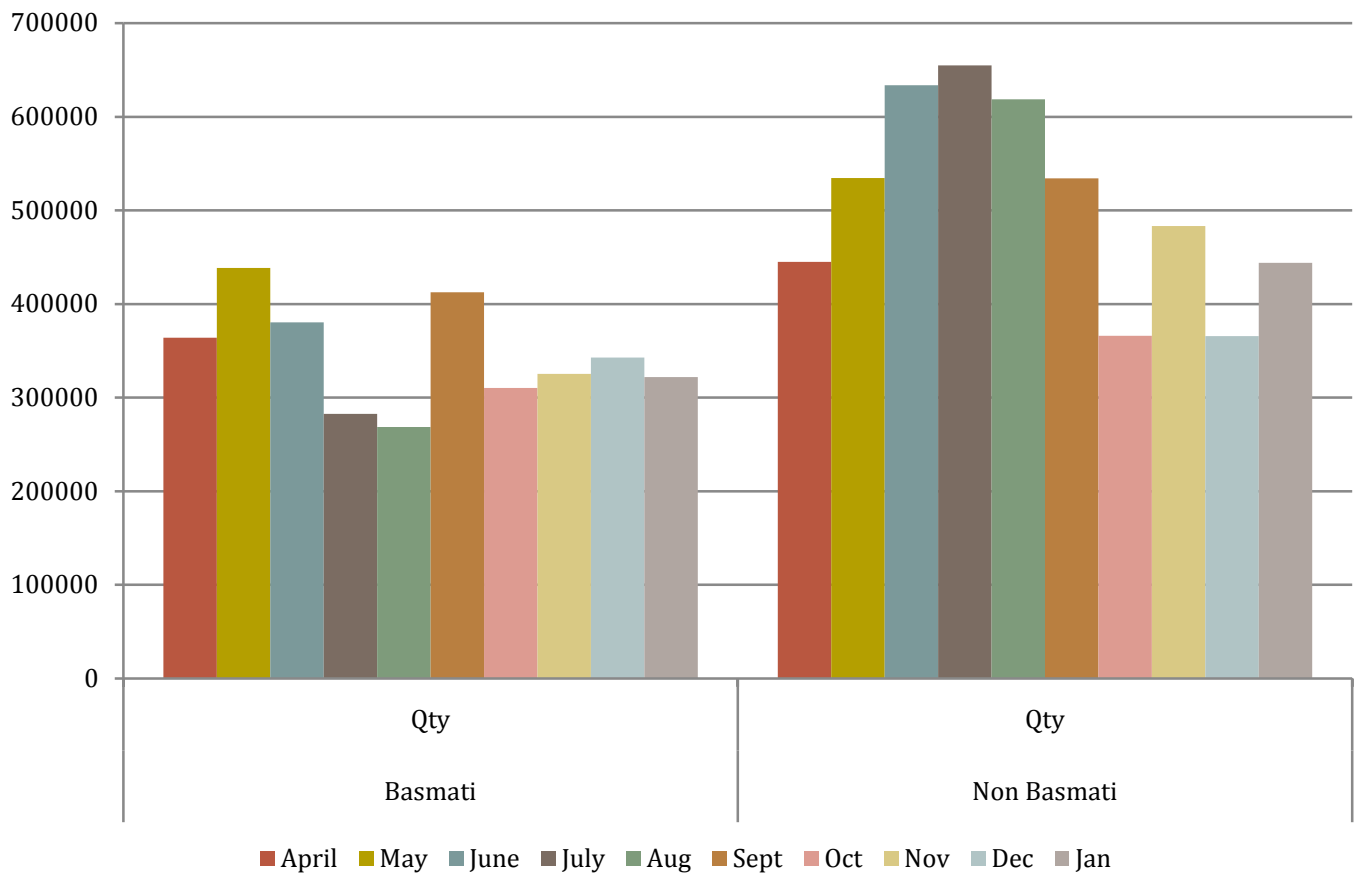
Qty in Tonne; Value in Rs Lacs

Source: Customs (Infodrive)

Month-to-Month Comparison

Year	Basmati		%	Non Basmati		%	Total Basmati + Non basmati		Total % (Qty)
	Qty (Ton)	Value (Rs lacs)		change (Qty)	Qty (Ton)		Value (Rs lacs)	change (Qty)	
2015									
April	364114	201343		445177	96500		809291	297843.9	
May	438550	230151	20.44	534527	110614	20.07	973077	340765	20.02
June	380474	201391	-13.2	633564	129626	18.2	1014038	331017	4.2
July	282654	147209	-25.7	654898	134433	3.36	937552	281642	-7.5
Aug	268534	138066	-4.9	618624	129095	-5.53	887158	267161	-5.3
Sept	412557	217862	53.6	534249	117104	-13.6	946806	334966	6.72
Oct	310220	148917	-24.8	366133	80339	-31.4	676353	229256	-28.5
Nov	325557	155368	5.58	483320	98253	32.01	808877	253621	19.88
Dec	342681	164540	5.26	365806	81635	-24.31	708487	246175	-12.41
Jan	322124	149726	-6.00	443825	113266	21.33	765949	262992	8.11
Total	3447465	1754573		5080123	1090865		8527588	2845439	

Month to Month Comparison



AIREA

BASMATI

Top Importers of JANUARY

	Country	Quantity	% Share (Qty)
1	IRAN	77714	24.13
2	UAE	65384	20.30
3	SAUDI ARABIA	64002	19.87
4	YEMEN	25560	7.93
5	IRAQ	11023	3.42
6	UK	10023	3.11
7	OMAN	8796	2.73
8	TURKEY	6450	2.00
9	NETHERLANDS	6162	1.91
10	USA	6134	1.90

High Value in terms of Unit Rate

	COUNTRY	AVG RATE(\$)
1	USA	1017
2	CANADA	858
3	OMAN	792
4	SAUDI ARABIA	750
5	YEMEN	713

Top Ports

	PORT	QUANTITY (ton)
1	MUNDRA	207767
2	KANDLA	26553
3	GURGAON ICD	23677

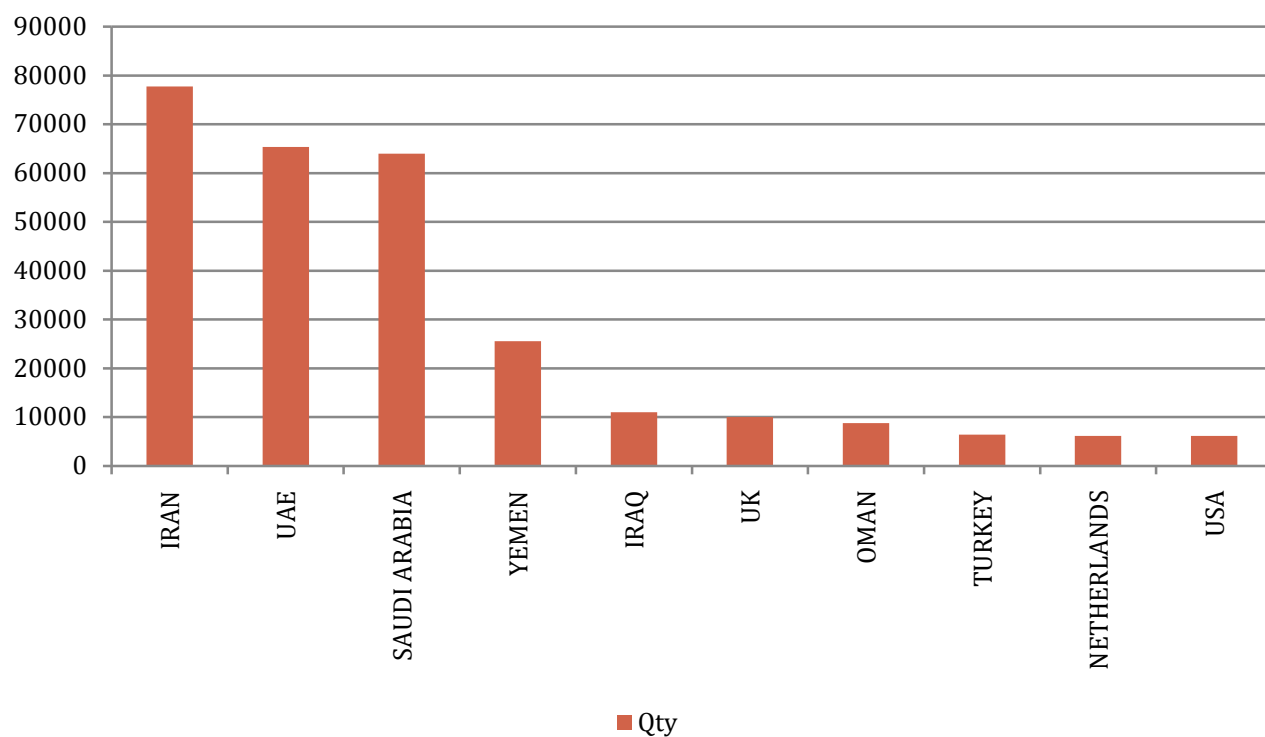
Top Importers December

	COUNTRY	QUANTITY (ton)
1	IRAN	107885
2	SAUDI ARABIA	66931
3	UAE	38235
4	IRAQ	22180
5	KUWAIT	17757

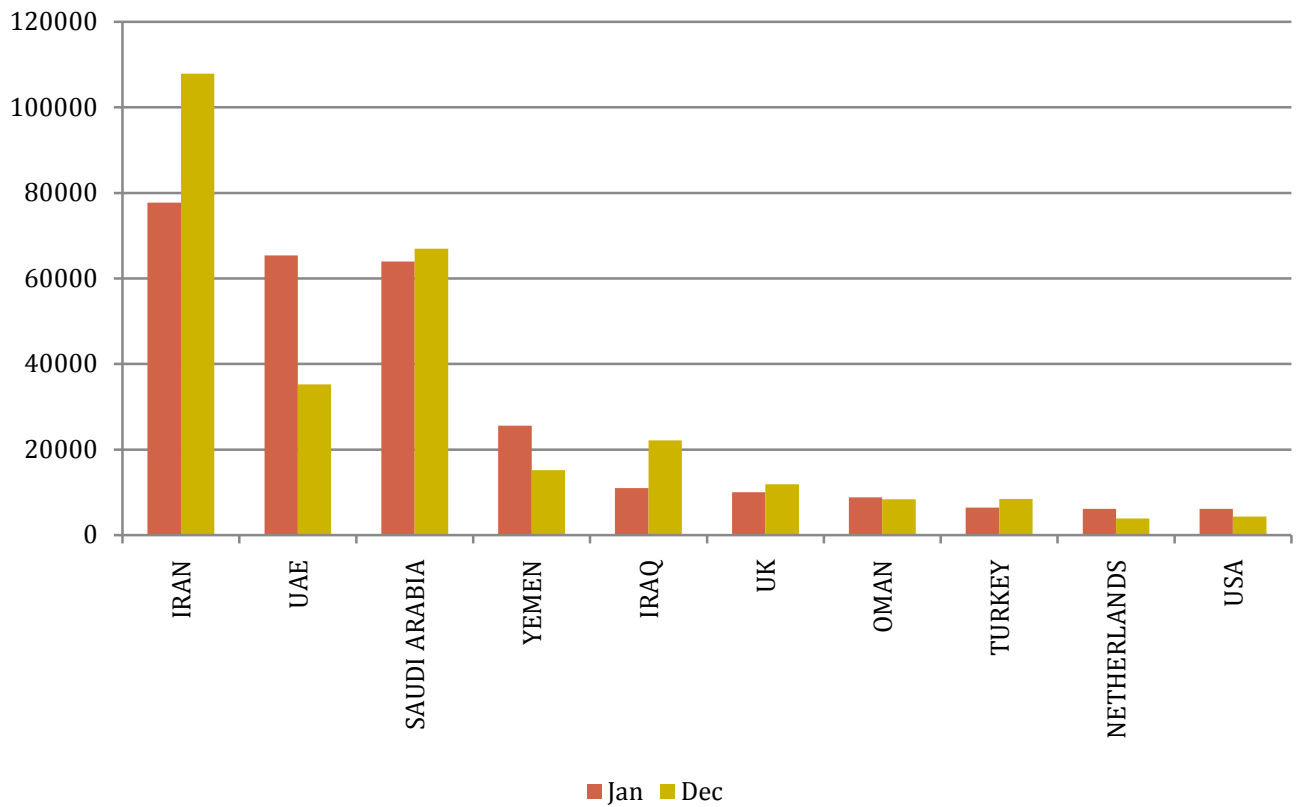
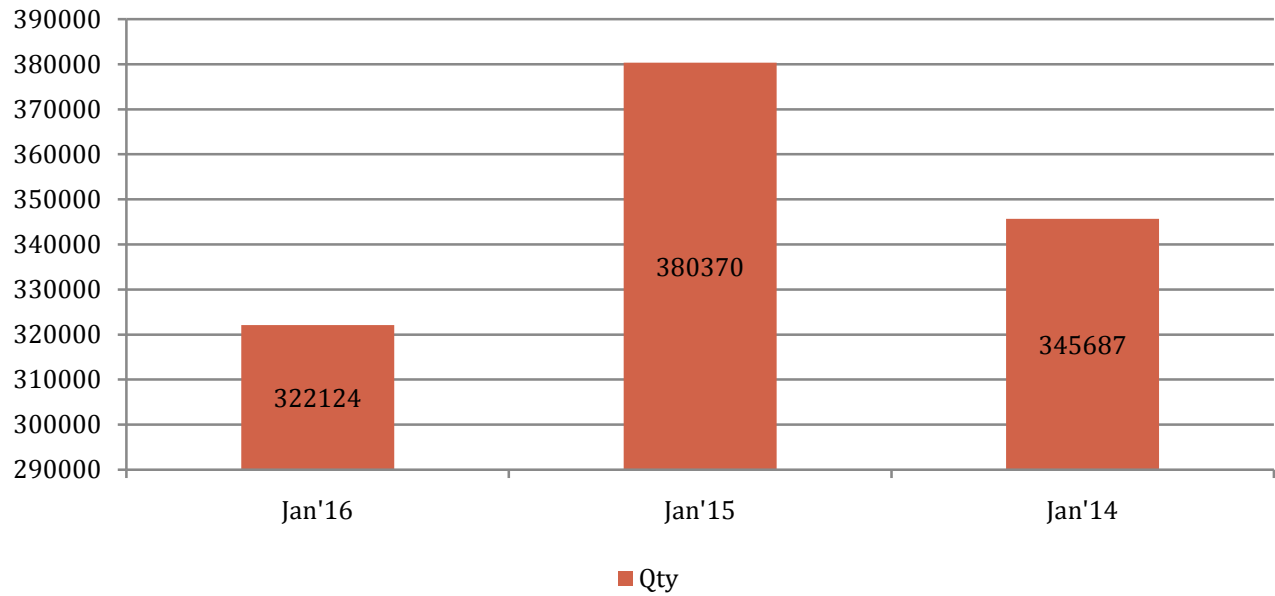
Year on Year Comparison: Basmati

Year	Basmati		% change (qty)
	Qty (ton)	Value (Rs lacs)	%
JANUARY 2016	322124	149726	-15.31
JANUARY 2015	380370	221757	10.03
JANUARY 2014	345687	287055	

January Top Importers



Year on Year Comparison Basmati



NON-BASMATI
Top Importers of JANUARY

	Country	Quantity	Share (%)
1	BENIN	46519	10.48
2	GUINEA	46517	10.48
3	COTE D IVOIRE	44629	10.06
4	SENEGAL	39393	8.88
5	DJIBOUTI	30528	6.88
6	UAE	28255	6.37
7	SOUTH AFRICA	21502	4.84
8	TURKEY	18515	4.17
9	SOMALIA	18336	4.13
10	TOGO	18093	4.08

HIGH VALUE IN TERMS OF UNIT RATE

	COUNTRY	AVG. RATE (\$)
1	YEMEN	481
2	SAUDI ARABIA	445
3	UAE	434
4	GUINEA	367
5	TOGO	312

Top Ports

	PORT	QUANTITY (ton)
1	KAKINADA	148400
2	MUNDRA	87317
3	CALCUTTA SEA	49967

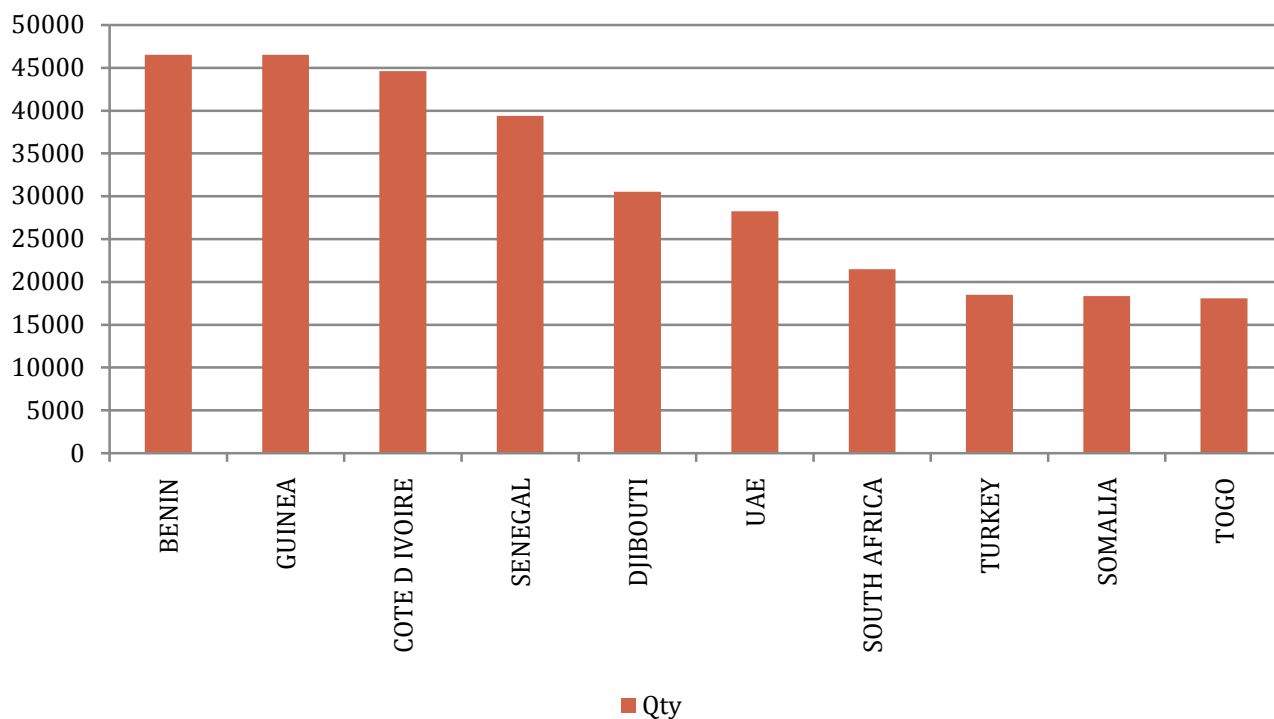
Top Importers of DECEMBER

	COUNTRY	QUANTITY
1	BENIN	44717
2	NIGERIA	35200
3	SENEGAL	32397
4	DJIBOUTI	30879
5	UAE	22909

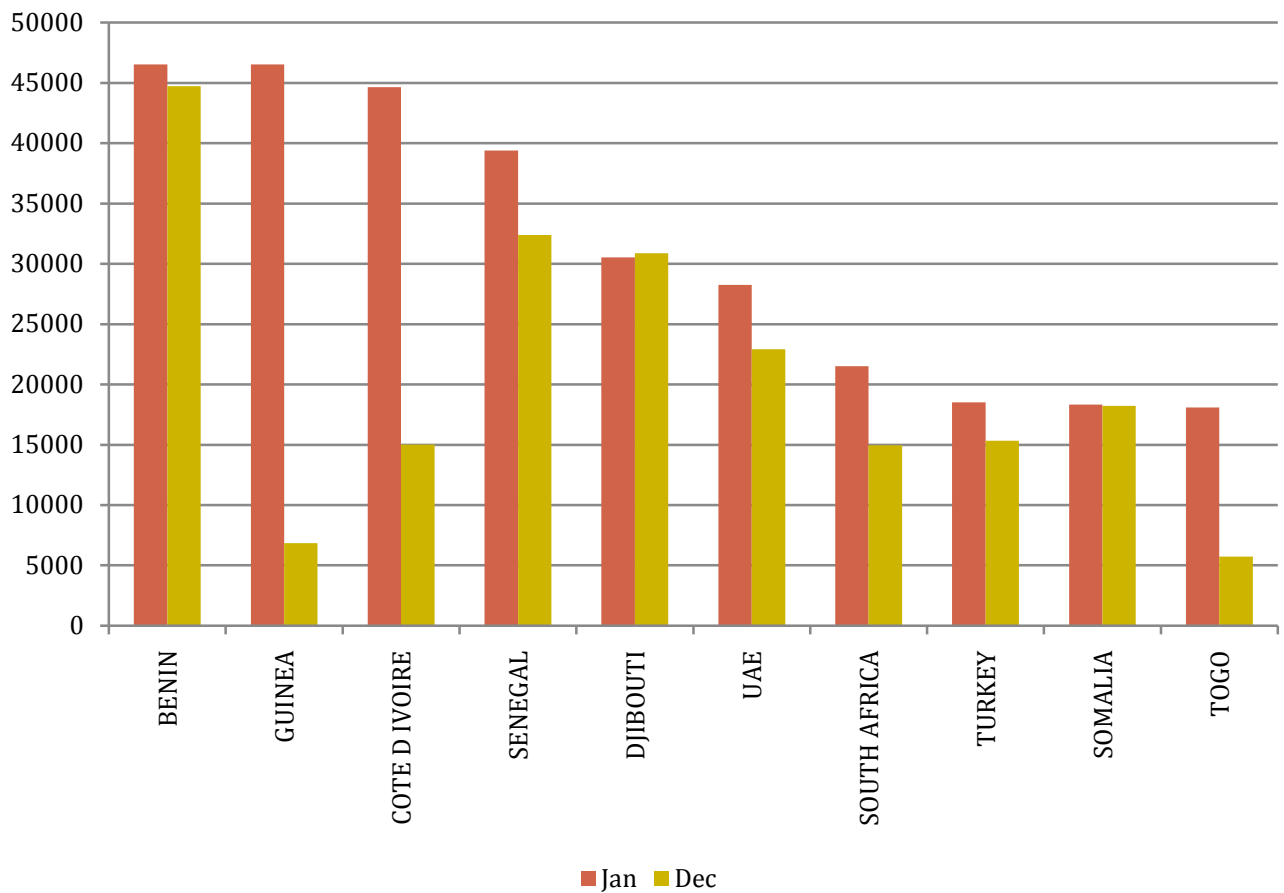
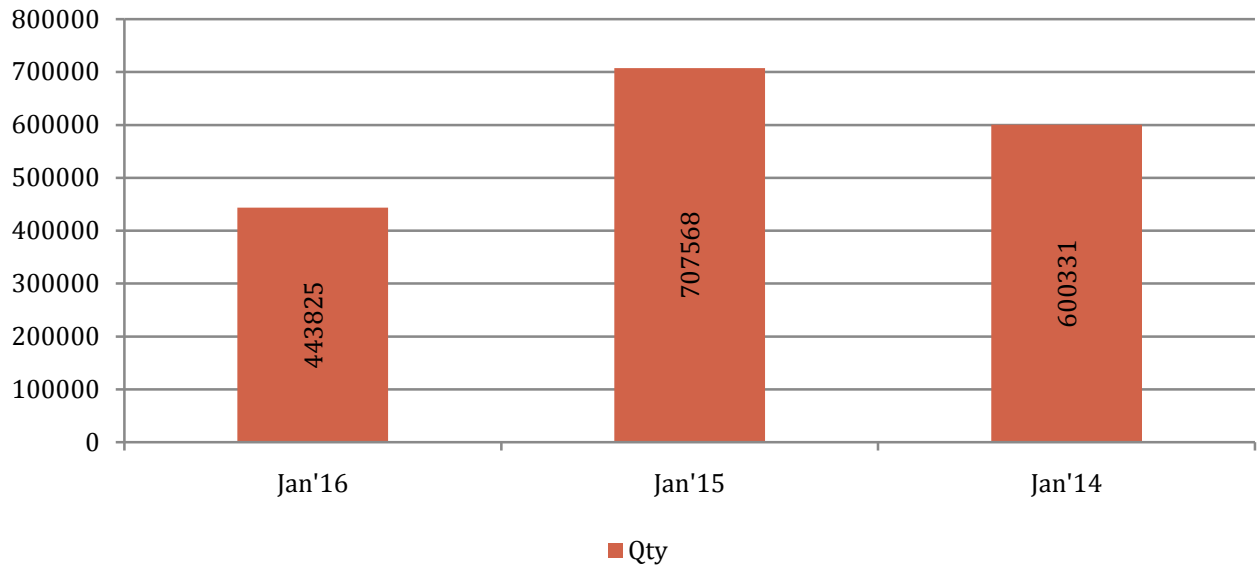
Year on Year comparison: Non Basmati

YEAR	Non Basmati		% change (qty)
	Qty (ton)	Value (Rs lacs)	%
January 2016	443825	113266	-37.27
January 2015	707568	159915	17.86
January 2014	600331	151710	

January Top Importers

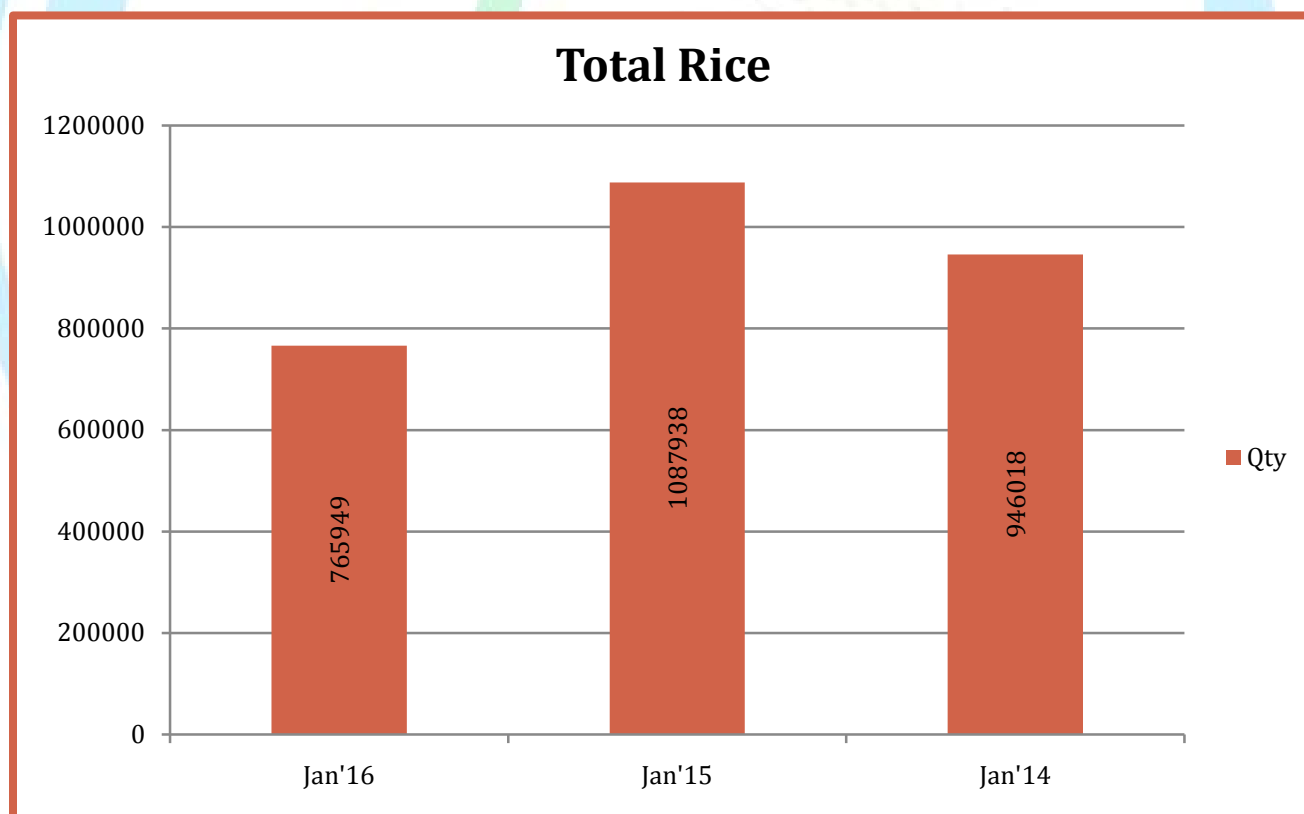


Year on Year Comparison Non Basmati



Year on Year comparison: Total Rice

Month	Total Rice Basmati+ Non Basmati	
	Qty(Ton)	Value(Rs Lacs)
January 2016	765949	262992
January 2015	1087938	381672
January 2016	946018	438765



Qty-MT
Value-Rs Lac

Basmati

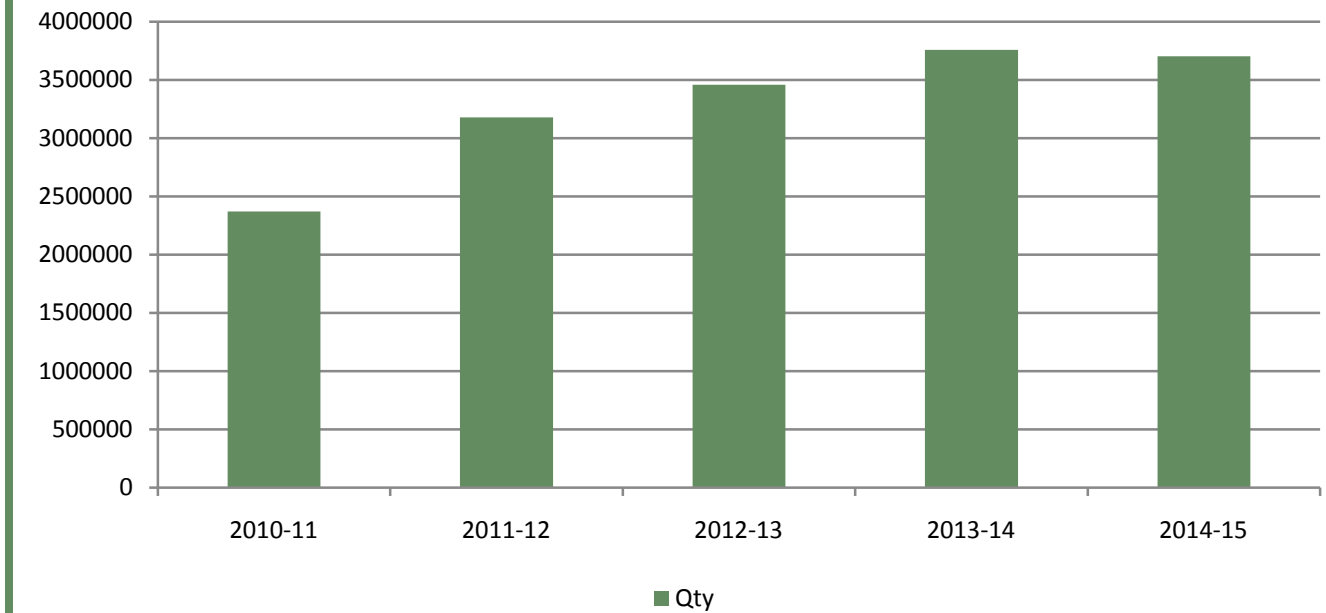
Months	2012-13		2013-14		2014-15		2015-16	
	qty	value	qty	value	qty	value	qty	value
April	278797	124095.1	392799	259012.9	285108	242828.5	348565	213671.8
May	322913	156636.2	345188	241733	337150	290474	431895	251399.5
June	346910	181816.6	378786	282534	364636	308190	351894	213011.2
July	299985	164130.7	333990	254022.5	233774	196313.4	276219	161864.4
August	248884	139080	275844	213016.1	217355	182882.6	270100	154122.3
Sept	230425	132658.1	206876	168745.5	203733	165977	405980	236905.86
Oct	193703	105582.8	180191	142560	295146	194555.9	304647	166453.65
Nov	207964	116446	252292	190266	298274	210240.8	301920	158709.63
Dec	286546	171816.6	376614	312557.8	382720	257996.7	378714	203263.47
Jan	318083	187039.9	345687	287055.5	350320	227593.9		
Feb	335395	207562	350092	300457.8	379888	235181.3		
March	387474	253055.3	319005	278051	400195	250632.9		
Total	3457079	1939919	3757364	2930012	3748299	2762867	3069934	1759401.76

Non Basmati

Months	2012-13		2013-14		2014-15		2015-16	
	qty	value	qty	value	qty	value	qty	value
April	275270	56521.33	392939	90706.32	390777	101506.4	466680	113225.9
May	715880	151427	473325	108988.3	425084	106612.7	577734	134471.2
June	593227	128390.8	559846	137214	493047	125316	599732	137487.1
July	486139	98844.37	652759	170139.7	535362	132136.2	673185	153655.4
August	467966	96509.85	708765	178591.1	699344	173089.3	575851	134391.7
Sept	451288	98119.87	790713	203330.6	886439	240976.4	536469	129816.92
Oct	644187	139275.4	622473	158512.6	822943	210810.9	381552	93522.5
Nov	627777	137912.5	422477	105588	726343	182487.5	477657	108487.74
Dec	808432	178038.5	663588	157914	594617	147738.3	375864	94294.61
Jan	551942	118873.1	600331	151710	780790	197770.6		
Feb	469221	104000.3	618623	155205	674187	156021.7		
March	557651	132017.4	512693	131416.6	654908	156449.4		
Total	6648980	1439930	7018532	1749316	7683841	1930915	4664724	1099353.11

Source: DGCIS

Basmati



Non Basmati

